

B&W Bowers & Wilkins

B&W Group Ltd
Dale Road
Worthing West Sussex
BN11 2BH England

T +44 (0) 1903 221800
F +44 (0) 1903 221801
info@bwgroup.com
www.bwspeakers.com

B&W Group (UK Sales)
T +44 (0) 1903 221 500
E uksales@bwgroup.com

B&W Group North America
T +1 978 664 2870
E marketing@bwgroupusa.com

B&W Group Asia
T +852 2869 9916
E info@bwgroup.hk

Kevlar is a registered trademark of DuPont.
Matrix and Nautilus are trademarks of
B&W Group Ltd.
Copyright © B&W Group Ltd.
E&OE. Printed in the U.K.
B&W Group Ltd reserves the right to amend
details of the specifications without notice in line
with technical developments.





Our Weather Monitors and Leisure Monitors complete the picture for custom installations.



A range of compact, hard-wearing weather monitors bring the characteristic Bowers & Wilkins' clarity and depth of sound to the garden, terrace, balcony, poolside or sauna.



The mounting flexibility of our VM, LM and Mini Theatre Series makes them ideal for use in retail stores and restaurants.

Photo acknowledgements:
Motoryacht photo courtesy of Benetti.

The 'Premium venues' photographs in this brochure are reproduced with the kind permission of (clockwise from top left):
2: Hotel Pavillon de Paris, France;
3: L'Escargot/White Star Line Restaurants, London, England.

Bowers & Wilkins has been the reference point in loudspeaker development and innovation for over 30 years.

Our groundbreaking Nautilus™ has been acclaimed as the best loudspeaker money can buy. Our 800 Series speakers, meanwhile, are specified by Abbey Road Studios, the home of landmark recordings such as Dark Side of the Moon by Pink Floyd and Abbey Road by The Beatles.

Countless other world-famous recording organisations, and studios, composers and musicians have also taken Bowers & Wilkins loudspeakers to their hearts. In fact, our reference speakers are used in over 80 per cent of all classical recordings.

Our philosophy is simple. Nothing must get in the way of the musical performance; it must be utterly faithful to the original in every last detail. It's a vision that has made Bowers & Wilkins the loudspeakers to aspire to for anyone who seeks audio perfection.

Now, the Bowers & Wilkins Custom Installation Series takes that vision of absolute purity to its logical conclusion.

Imagine. World-leading sound reproduction concealed discreetly within your walls or ceilings. This isn't mere background music; this is pristine quality sound from the forefront of audio technology.

It's the ultimate temptation for music lovers whose passion for exquisite sound is matched by their desire for clean, stylish, uncluttered living.

Listen and you'll see.



Left: the stunning Nautilus™, the result of a five-year development programme. The brief: to stop at nothing in the quest for the perfect loudspeaker.



As you'd expect from Bowers & Wilkins, the Custom Installation Series harnesses state-of-the-art technologies originally developed for the world's most advanced loudspeakers – speakers of the stature of our flagship Nautilus™ and our award-winning 800 Series.

Our in-wall Signature 8NT, for example, is derived directly from the critically acclaimed Nautilus™ 803, a speaker considered by many professional journalists to be one of the finest ever made.

With our Custom Installation Series, however, there are no worries about how to accommodate large speaker cabinets, what finish to choose, or where to hide cables.

Each model in the range installs neatly into wall or ceiling, fitting virtually flush to the surface.

So now you can focus all your attention on the pure aesthetics of your living or work space. The only visible evidence of each speaker is its slimline grille and frame, which can be painted to blend perfectly with your interior style, or even covered with co-ordinating fabric.

The result is sound that's near invisible to the eye, yet with a presence that's capable of stirring the heart and soul, and energising the mind.

As you'll discover on the following pages, the possibilities are almost limitless. Professionally fitted by an authorised B&W custom installer into virtually any type of wall or ceiling, this is music that simply demands to be heard, not seen.

Left: Our high-end Custom Installation Series models are derived from our acclaimed 800 Series, the natural choice of many leading musicians such as Dave Stewart, who uses the 802 for his listening pleasure at home.

Signature 8NT – the reference

For many years our original Signature 7 in-wall speaker set the standard for compact audiophile in-wall speakers. Remove the ‘compact’ tag, however, and a new world of possibilities opens up.

The Signature 8NT is a serious three-way in-wall system that can rightfully claim the ultimate high-end status.

Its twin bass drivers with die-cast chassis, FST midrange driver and Nautilus™ tube-loaded tweeter, all carefully blended together with high-quality crossover components demonstrate a heritage that can be traced directly to our 800 Series products, with their enviable list of accolades and awards.

Quite simply, the Signature 8NT is the reference for in-wall loudspeakers. Supremely versatile, it provides a universal solution for those who demand the very best. Whether the application is traditional two-channel audio or multi-channel home cinema – front, centre or surround – this speaker handles all roles with consummate ease and is sufficiently powerful for larger rooms.



The midrange and tweeter units are mounted on a rotatable sub-baffle, which enables the whole speaker to be used in either vertical or horizontal orientation without impairing horizontal dispersion – so every seat is the best seat in the house.



The Signature 8NT's Nautilus™ tube-loaded tweeter's response extends right up to 50kHz (-6dB). So if you want to hear the difference that the new high sampling frequency recording formats SACD and DVD-A can make, this is the driver for you. There's no need for a separate super-tweeter.



Conventional free-standing B&W speakers such as the 800 Series benefit from our unique Matrix™ internal bracing system, which is used to create extreme rigidity in the cabinet. The Signature 8NT's back box builds on this experience and delivers similar sonic benefits. The back box's corrosion-free aluminium panels are fitted with bi-directional bracing and vibration damping panels. This dramatically reduces coloration from vibration and aids 3D imaging, helping the listener to hear images formed in the space between the speakers.

The powerhouse of the Nautilus™-derived Signature 8NT comprises a pair of 200mm (7 inch) bass drivers straddling a centrally mounted midrange/high frequency module. With suspensions specifically tuned to the in-wall application and rigid, resin-impregnated composite pulp/ Kevlar® fibre cones, these drivers faithfully portray the most dynamic and powerful signals with ease, yet retain the agility and timing required for complex musical passages. Working in its own isolating chamber, the FST midrange driver with its woven Kevlar® cone is a smaller version of the driver found in our 3-way 800 Series models, renowned for its ability to retrieve the finest detail.

Wall to wall innovation

Bowers & Wilkins' position at the forefront of audio research and innovation is unrivalled.

Our 'trickle down' approach to the use of audio technologies is also well known: we routinely use the world-leading technologies developed for our most exclusive loudspeakers in speaker ranges costing much less.

For example, both the Signature 8NT and 7NT models feature the tube-loaded tweeter technology originally developed for our renowned Nautilus™ speaker.

Throughout the Custom Installation Series you'll find further evidence of our unparalleled innovation in loudspeaker design and our relentless commitment to absolute clarity of sound. And all with one clear goal: your pure enjoyment of music.



Kevlar® cone
At the heart of the Custom Installation Series are cones of woven fabric. Whether the material is glass fibre or the familiar yellow of Kevlar®, the blend of fibre, resins and cone geometry produces an incredibly well controlled cone that reduces standing waves, minimises coloration and leaves transient 'attack' unblurred. The result: remarkably clean, clear and dynamic sound.



FST™ midrange driver
The FST™ (Fixed Suspension Transducer) midrange driver in our award winning 800 Series adopted a 'surroundless' design mounted in a more open chassis structure to reduce internal reflections of sound. The same principles are applied here. The result: further reductions in coloration and enhanced clarity.



Anodised aluminium dome tweeter
Anodised aluminium domes are used on most models in the Custom Installation Series, and extend the high frequency response well above the limits of human hearing. Added to the Signature and 800 Series models is Nautilus™ tube loading. The result: sweet and precise treble sounds that bring out the life in any performance.

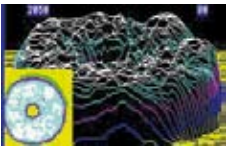


Cast drive unit chassis
Most of the bass/midrange drive units used in this speaker series use die-cast chassis rather than the more common pressed steel chassis. The extra rigidity this brings to the speaker structure means that sound reproduction is more tightly controlled. The result: improved bass 'speed' and 'impact'.

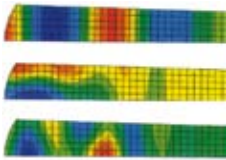


Tapered tube tweeter
A monumental advance in loudspeaker technology, the tapered, tube-loaded tweeter absorbs unwanted sonic radiation from the rear of the diaphragm. The result: a more focused, natural high frequency sound, and the ability to deliver the ultrasonic frequencies of new digital formats such as SACD and DVD-A with unparalleled precision.

At our 'University of Sound' R&D facility we employ the most advanced measurement, forecasting and subjective listening techniques. It's the perfect marriage of science and art.



Laser Interferometry
Bowers & Wilkins was the first speaker company to use laser interferometry to actually see the sound being produced by a loudspeaker. The benefits this brings to driver and enclosure design are incalculable.



Finite Element Analysis of sound
Computer-aided Finite Element Analysis programs enable us to build drive units, step by step, based on an accurate prediction of how the component parts of a loudspeaker will perform – separately or together.



See nothing, hear everything

Hide the hardware; reveal the true quality of the music. From two-channel hi-fi to all-singing, all-dancing, multi-room audio and home cinema, our custom installation speakers are capable of delivering sound that is, quite simply, out of sight.



Living sound

With speakers from Bowers & Wilkins, a custom-installed audio system can be as simple or as ambitious as you choose.

Perhaps all you desire is an audiophile-quality hif-fi system. If so, a pair of our CCM 817 ceiling speakers connected to a serious amp and CD player can be a purist's dream come true.

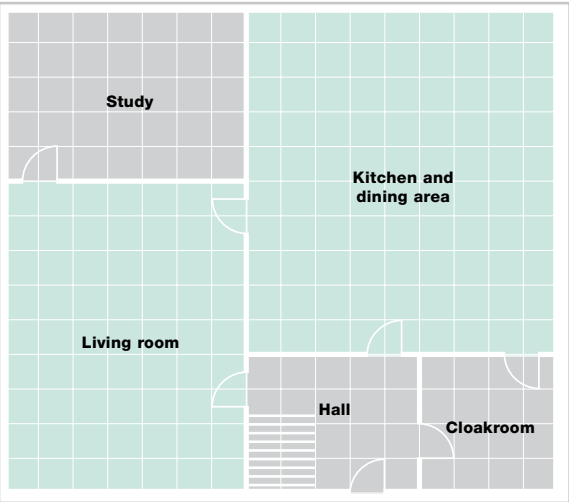
Maybe your idea of the perfect audio system is one that knows no bounds. Your dream is music to suit the moods of different areas and the tastes of different people. If that sounds like you, an authorised B&W installer can advise on the ideal multi-room audio controller to complement your Bowers & Wilkins speakers.

But why limit yourself to sound alone? There's nothing like a multi-channel home cinema system to bring home the benefits of our discreet in-wall or in-ceiling speakers. If you've ever wondered how you'd get by sharing floor space with five or more conventional loudspeakers, you'll know what we mean.

With our Custom Installation Series, music and movies can enrich your life, but needn't intrude into it.

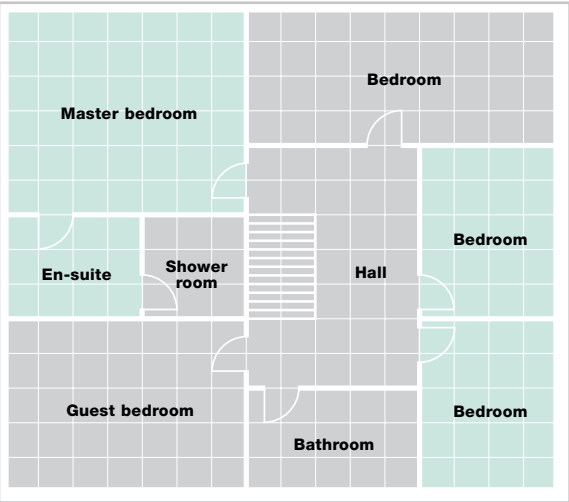


Our custom-installed speakers are equally at home bringing super audio to the interiors of superyachts and other ocean-going craft.



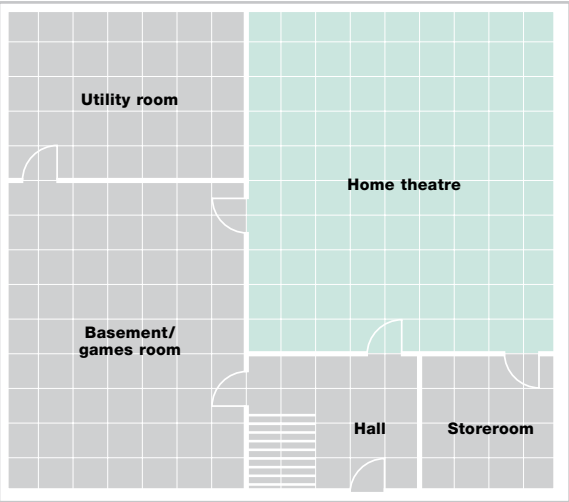
Start small

An entry-level system might comprise two pairs of Bowers & Wilkins in-wall speakers driven by a two-channel hi-fi system. Two pairs of near-invisible speakers are installed in the main living area and in the kitchen/dining area. The clutter of speakers, speaker stands and trailing cables that never did quite go with your décor is now gone forever.



Move on up

This mid-range installation matches our custom installation speakers to a multi-room audio system. The listening experience is now extended to other areas of the home. Discreet ceiling speakers in the master bedroom and bathroom add high quality sound that fits in easily with your lifestyle. Further in-wall speakers installed in the kids' bedrooms mean they can enjoy their own music, and their very own volume levels.



Entertain the possibilities

This whole-house system for the serious sound enthusiast embraces the full repertoire of audio expertise from Bowers & Wilkins. Hi-fi sound to the main living and eating areas is just for starters. The highest levels of audio performance can be enjoyed all around the home. A study provides a dedicated audiophile listening room. But the real drama is experienced at the heart of the house in a state-of-the-art, multi-channel home theatre.

Get closer

You may not see them, but you'll certainly feel their presence.

In this state-of-the-art custom installation, the Signature 8NT – shown here in centre channel and front left and right channel roles – takes home cinema into an entirely new dimension.

Because the midrange and tweeter units are mounted on a rotatable sub-baffle, the Signature 8NT can be used either vertically or horizontally.

To complete this wonderfully discreet, high-end, multi-channel installation, whether it is 5.1, 6.1 or 7.1, further Signature 8NT speakers are added for the surround channels and a B&W ASW825 active subwoofer takes care of ultra-low bass and special effects.

If wall space is at a premium for the surround channels, our 'trickle down' technology philosophy gives the flexibility of using the smaller CWM LCR8 if required, while still retaining good timbre matching.



Premium venues, superior sound

It's not only in homes that our custom installation speakers cast their spell. Architects and interior designers also specify our decidedly discreet speakers to help create the kind of ambience found only in the finest places.

This isn't mere 'elevator' music. No, a Bowers & Wilkins custom installation is designed to take your customers to a higher plane in a rather more sophisticated manner.

This is sound of unrivalled vitality, depth and richness – the quality of sound to aspire to for those whose aim it is to create the ultimate customer experience. Without doubt, these are the speakers to help you achieve your goal.

Whether creating a relaxed and luxurious setting in the most stylish boutique hotel, in the most upmarket bar or café, or in other unique leisure, retail or business environments, the Bowers & Wilkins Custom Installation Series is the premier choice.



Authorised B&W custom installers are specially trained to specify the optimum combination of speakers and audio system for your needs. They will also carry out installation with the minimum of disruption.

Custom Installation
Series



	Sig 8NT	CWM 8180	CWM DS8	CWM LCR8	Sig 7NT	CWM LCR7	CWM 800	CWM 650	CWM 500	CWM 6260	CWM 6160	CWM Cinema	CDS6 S3
Description	3-way in-wall system	3-way in-wall system	3-way dipole/2-way monopole in-wall system	2.5-way in-wall system	2-way in-wall system	3-way in-wall system	2-way in-wall system	2-way in-wall system	2-way in-wall system	2-way in-wall system	2-way in-wall system	2-way magnetically shielded in-wall system	2-way in-wall dipole/ monopole surround system
Drive units	2 x 180mm (7 in) paper/ Kevlar® cone bass. 130mm (5 in) Kevlar® cone FST™ midrange. 25mm (1 in) Nautilus™ tube loaded aluminium dome tweeter	200mm (8 in) Rohacell cone bass. 130mm (5 in) Kevlar® cone FST™ midrange. 25mm (1 in) Nautilus™ tube loaded aluminium dome tweeter	180mm (7 in) Kevlar® cone bass/midrange. 2 x 80mm (3 in) Kevlar® cone midrange. 3 x 25mm (1 in) Nautilus™ tube loaded aluminium dome tweeter	2 x 130mm (5 in) aluminium cone bass. 2 x 130mm (5 in) Kevlar® cone midrange. 25mm (1 in) Nautilus™ tube loaded aluminium dome tweeter	180mm (7 in) Kevlar® cone bass/midrange. 25mm (1 in) Nautilus™ tube loaded aluminium dome tweeter	3 x 100mm (4 in) mica cone bass. 100mm (4 in) Kevlar® cone midrange. 25mm (1 in) Nautilus™ tube loaded aluminium dome tweeter	200mm (8 in) Kevlar® cone bass/midrange. 25mm (1 in) aluminium dome tweeter	165mm (6.5 in) Kevlar® bass/midrange. 25mm (1 in) aluminium dome tweeter	130mm (5 in) Kevlar® cone bass/midrange. 25mm (1 in) Ultra 12 tweeter	165mm (6.5 in) glassfibre cone bass/midrange. 25mm (1 in) textile dome tweeter	165mm (6.5 in) glassfibre cone bass/ midrange. 25mm (1 in) Ultra 12 tweeter	2 x 130mm (5 in) Kevlar® cone bass/midrange. 25mm (1 in) aluminium dome tweeter	130mm (5 in) Kevlar® cone bass/midrange. 2 x 80mm (3 in) paper cone midrange/high frequency. 25mm (1 in) aluminium dome tweeter
Freq. Range (-6dB)	28Hz and 50kHz	35Hz and 50kHz	40Hz and 50kHz (monopole) 40Hz and 18kHz (dipole)	35Hz and 50kHz	35Hz and 50kHz	54Hz and 30kHz	35Hz and 30kHz	45Hz and 30kHz	50Hz and 22kHz	40Hz and 30kHz	40Hz and 22kHz	50Hz and 30kHz	63Hz and 42kHz (monopole) 63Hz and 15kHz (dipole)
Maximum amp power	200W	150W	150W	150W	150W	150W	150W	130W	100W	130W	130W	150W	100W
Sensitivity spl (2.83V, 1m)	90dB	89dB	88dB	91dB	88dB	85dB	89dB	89dB	88dB	89dB	89dB	91dB	89dB
Impedance Nominal (min)	8Ω (3.6Ω)	8Ω (5.0Ω)	8Ω (3.3Ω)	8Ω (4.5Ω)	8Ω (3.6Ω)	8Ω (3.6Ω)	8Ω (3.0Ω)	8Ω (3.0Ω)	8Ω (3.0Ω)	8Ω (3.6Ω)	8Ω (3.6Ω)	8Ω (3.6Ω)	8Ω (3.3Ω)
Frame height	830mm (32.7 in)	524mm (20.6 in)	524mm (20.6 in)	708mm (27.9 in)	371mm (14.6 in)	625mm (24.6 in)	371mm (14.6 in)	310mm (12.2 in)	228mm (9 in)	310mm (12.2 in)	310mm (12.2 in)	255mm (10 in)	285mm (11.2 in)
Frame width	258mm (10.2 in)	294mm (11.6 in)	294mm (11.6 in)	219mm (8.6 in)	255mm (10 in)	175mm (6.9 in)	255mm (10 in)	216mm (8.5 in)	175mm (6.9 in)	216mm (8.5 in)	216mm (8.5 in)	371mm (14.6 in)	373mm (14.7 in)
Cut-out height	796mm (31.4 in)	485mm (19.1 in)	485mm (19.1 in)	668mm (26.3 in)	337mm (13.3 in)	600mm (23.6 in)	337mm (13.3 in)	281mm (11.1 in)	212mm (8.3 in)	281mm (11.1 in)	281mm (11.1 in)	220mm (8.7 in)	247mm (9.8 in)
Cut-out width	226mm (8.9 in)	255mm (10 in)	255mm (10 in)	180mm (7.1 in)	220mm (8.7 in)	150mm (5.9 in)	220mm (8.7 in)	186mm (7.3 in)	156mm (6.1 in)	186mm (7.3 in)	186mm (7.3 in)	337mm (13.3 in)	335mm (13.2 in)
Depth behind surface	99mm (3.9 in)	92mm (3.6 in)	87mm (3.4 in)	89mm (3.5 in)	98mm (3.8 in)	97mm (3.8 in)	95mm (3.7 in)	85mm (3.3 in)	85mm (3.3 in)	93mm (3.7 in)	89mm (3.5 in)	85mm (3.4 in)	71mm (2.8 in)
Protrusion	5mm (0.2 in)	21mm (0.8 in)	21mm (0.8 in)	5mm (0.2 in)	3mm (0.1 in)	3.5mm (0.1 in)	3mm (0.1 in)	3mm (0.1 in)	3mm (0.1 in)	3mm (0.1 in)	3mm (0.1 in)	3mm (0.1 in)	71mm (2.8 in)
Weight	10kg (22 lb)	8.3kg (18.2 lb)	5.7kg (12.5 lb)	8.0kg (17.6 lb)	3.0kg (6.6 lb)	4.2kg (9.3 lb)	2.9kg (6.3 lb)	2.4kg (5.3 lb)	1.4kg (3.1 lb)	2.9kg (6.4 lb)	1.6kg (3.5 lb)	3.7kg (8.2 lb)	3.9kg (8.6 lb)



	CCM 817	CCM 80	CCM 65	CCM 50	CCM 746S	CCM 628	CCM 618	CCM 636	CCM 626	CCM 616	CCM 646S
Description	2-way in-ceiling system	2-way in-ceiling system	2-way in-ceiling system	2-way in-ceiling system	2-way dual channel in-ceiling system	2-way in-ceiling system	2-way in-ceiling system	2-way in-ceiling system	2-way in-ceiling system	2-way in-ceiling system	2-way dual channel in-ceiling system
Drive units	180mm (7 in) Kevlar® cone bass/midrange. 25mm (1 in) Nautilus™ tube loaded aluminium dome tweeter. Both units angled 30 degrees	200mm (8 in) Kevlar® cone bass/midrange. 25mm (1 in) aluminium dome tweeter. Adjustable tweeter angle	165mm (6.5 in) Kevlar® bass/midrange. 25mm (1 in) aluminium dome tweeter. Adjustable tweeter angle	130mm (5 in) Kevlar® cone bass/midrange. 25mm (1 in) Ultra 12 tweeter	165mm (6.5 in) Kevlar® cone bass/midrange. 2 x 25mm (1 in) aluminium dome tweeter	200mm (8 in) glassfibre cone bass/midrange. 25mm (1 in) textile dome tweeter. Adjustable tweeter angle	200mm (8 in) glassfibre cone bass/midrange. 25mm (1 in) Ultra 12 tweeter. Adjustable tweeter angle	165mm (6.5 in) glassfibre cone bass/midrange. 25mm (1 in) textile dome tweeter. Adjustable tweeter angle	165mm (6.5 in) glassfibre cone bass/midrange. 25mm (1 in) Ultra 12 tweeter. Adjustable tweeter angle	165mm (6.5 in) glassfibre cone bass/midrange. 25mm (1 in) Ultra 12 tweeter	165mm (6.5 in) glassfibre cone bass/midrange. 2 x 25mm (1 in) Ultra 12 tweeter
Freq. Range (-6dB)	40Hz and 50kHz	35Hz and 30kHz	45Hz and 30kHz	50Hz and 22kHz	40Hz and 22kHz	34Hz and 30kHz	35Hz and 22kHz	40Hz and 30kHz	40Hz and 22kHz	40Hz and 22kHz	40Hz and 22kHz
Maximum amp power	150W	150W	130W	100W	130W	150W	150W	130W	130W	130W	130W
Sensitivity spl (2.83V, 1m)	89dB	90dB	89dB	88dB	86dB	90dB	90dB	89dB	89dB	89dB	86dB
Impedance Nominal (min)	8Ω (3.5Ω)	8Ω (3.0Ω)	8Ω (3.0Ω)	8Ω (3.0Ω)	8Ω (3.0Ω)	8Ω (3.0Ω)	8Ω (3.1Ω)	8Ω (3.0Ω)	8Ω (3.1Ω)	8Ω (3.6Ω)	8Ω (3.6Ω)
Frame diameter	271(10.7 in)x242mm(9.5 in)	280mm (11 in)	232mm (9.1 in)	201mm (7.9 in)	232mm (9.1 in)	280mm (11 in)	280mm (11 in)	232mm (9.1 in)	232mm (9.1 in)	232mm (9.1 in)	232mm (9.1 in)
Cut-out diameter	234mm (9.2 in)	254mm (10 in)	205mm (8.1 in)	175mm (6.9 in)	205mm (8.1 in)	254mm (10 in)	254mm (10 in)	205mm (8.1 in)	205mm (8.1 in)	205mm (8.1 in)	205mm (8.1 in)
Depth behind surface	102mm (4 in)	100mm (4 in)	95mm (3.7 in)	80mm (3.1 in)	95mm (3.7 in)	109mm (4.3 in)	109mm (4.3 in)	103mm (4.1 in)	103mm (4.1 in)	103mm (4.1 in)	103mm (4.1 in)
Protrusion	63mm (2.5 in)	4mm (0.2 in)	4mm (0.2 in)	4mm (0.2 in)	4mm (0.2 in)	4mm (0.2 in)	4mm (0.2 in)	4mm (0.2 in)	4mm (0.2 in)	4mm (0.2 in)	4mm (0.2 in)
Weight	2.6kg (5.7 lb)	2.2kg (4.8 lb)	1.8kg (4.1 lb)	1.5kg (3.4 lb)	1.6kg (3.5 lb)	1.7kg (3.8 lb)	1.7kg (3.8 lb)	1.5kg (3.3 lb)	1.5kg (3.3 lb)	1.4kg (3 lb)	1.7kg (3.8 lb)

Installation

All speakers in the Custom Installation Series have been designed for optimum sound reproduction when installed in most types of solid or plasterboard constructions. For further information please consult an authorised B&W custom installer.



Pre-mount kit
Used in new drywall construction, the PMK identifies the position of the speaker during construction and provides a guide for cutting the plasterboard.



Back box
In drywall construction, the back box increases sound insulation to adjoining rooms and provides the fire safety barrier sometimes required by building regulations to prevent any fire present in the wall cavity from spreading into the room. Use it in solid construction to define a suitable working volume for the speaker, which may need to extend beyond the boundaries of the wall frame.



Swing out dog fixings
Swing out dogs provide a quick and effective method of securing the speaker to plasterboard. Initially stowed inboard of the wall frame, the dogs, or cantilever clamps, swing out behind the plasterboard on first turning the fixing screws. Further turning draws the dogs forward so the plasterboard is securely clamped between them and the flange of the wall frame.



Pivoting/tilting tweeter
It is not always possible to position the speakers for best coverage of the listening area. High frequencies in particular tend to have a narrower spread than low frequencies. The ability to angle the tweeter so that it points towards the listeners maintains the correct sound balance while allowing more flexibility in the installation. In certain models the tweeter housing angles for adjustable off-axis treble response.



EQ switch
If you need to put speakers behind an acoustically transparent screen, or perhaps completely hide them behind a light decorative fabric, you will inevitably lose some high frequency energy. In those or other cases where the room acoustics are less than ideal, it is useful to be able to adjust the high frequency level of the speaker to restore the correct balance.

Key audio and installation
features overview

	Nautilus™ tweeter	Kevlar® cone	Magnetic shielding	Rotating MF/HF module	Pivoting tweeter	EQ switch	Swing out dog fixings	Optional back box	Pre-mount kit
Signature 8NT	■	■	-	■	-	-	-	BB Sig 8NT	PMK 8NT
CWM 8180	■	■	-	■	-	-	■	BB DS8/8180	PMK DS8/8180
CWM DS8	■	■	-	-	-	-	■	BB DS8/8180	PMK DS8/8180
CWM LCR8	■	■	-	-	-	-	■	BB LCR8	PMK LCR8
Signature 7NT	■	■	-	-	-	3-pos	■	BBW8	PMK 800
CWM LCR7	■	■	-	-	-	-	■	BB LCR7	PMK LCR7
CWM 800	-	■	-	-	-	3-pos	■	BBW8	PMK 800
CWM 650	-	■	-	-	-	3-pos	■	BBW6	PMK 650
CWM 500	-	■	-	-	-	2-pos	■	-	PMK 500
CWM 6260	■	-	-	-	-	3-pos	■	BBW6	PMK 650
CWM 6160	-	-	-	-	-	-	■	BBW6	PMK 650
CWM Cinema	-	■	■	-	-	3-pos	■	BBW8	PMK 800
CDS6 S3	■	■	-	-	-	-	■	-	PMK CDS6
CCM 817	■	■	-	-	-	-	■	BB817	PMK 817
CCM 80	-	■	-	-	■	3-pos	■	BBC8	PMK c80
CCM 65	-	■	-	-	■	3-pos	■	BBC6	PMK c65
CCM 50	-	■	-	-	-	2-pos	■	-	PMK c50
CCM 746S	-	■	-	-	-	3-pos	■	BBC6	PMK c65
CCM 628	-	-	-	-	■	3-pos	■	BBC8	PMK c80
CCM 618	-	-	-	-	■	3-pos	■	BBC8	PMK c80
CCM 636	-	-	-	-	■	3-pos	■	BBC6	PMK c65
CCM 626	-	-	-	-	■	3-pos	■	BBC6	PMK c65
CCM 616	-	-	-	-	-	-	■	BBC6	PMK c65
CCM 646S	-	-	-	-	-	3-pos	■	BBC6	PMK c65