

CLED100 & CLED200 MR-TLT

Mini Recessed Tilt LED Lighting Fixture

The CLED100 and CLED200 MR-TLT is a ultra-low glare luminaire for general purpose lighting. This product uses the usual powerful CLED series light engines but has a smaller, minimalist 76mm bezel. As a tilt downlight, the MR-TLT sets the LED engine back behind a 20mm black baffle which tilts 30 degrees. The baffle is powder coated with a low gloss finish to reduce glare. This product is independently certified as suitable for general lighting to replace the halogen lamp. CLED products have exceptional warmth of light and consistency of +/- 38 Kelvin – one MacAdam ellipse. CLED products have guaranteed compatibility and dimming performance with recommended Crestron lighting control systems.

CLED100 & CLED200

The Crestron CLED100 & CLED200 are part of the proven Crestron lighting range. This range of LED fixtures replicate the performance, colour temperature and CRI of a traditional halogen fixture.

Guaranteed Smooth Dimming

The CLED100 & CLED200 dim smoothly from 100-0%. This dimming curve mimics the performance of a halogen down light, even warming when dimmed at low levels. This is made possible by using the Crestron recommended mains dimmable driver in conjunction with Crestron DIM1-DIMU4, CLXI-1DELV4 or CLWI-DIMWEX (wireless solution for retrofit). The CLED range will be supplied with a mains dimmable driver, DALI and 0-10v drivers are also available upon request.

Guaranteed Colour Consistency

The more precise the binning, the more precise of the colour temperature will be. Crestron has exceptionally precise binning to 1/16th of a bin (within 1 MacAdam Ellipse); this binning has a variation that is so small no human eye can see the difference between any Crestron LED down light.

CRI (Colour Rendering Index)

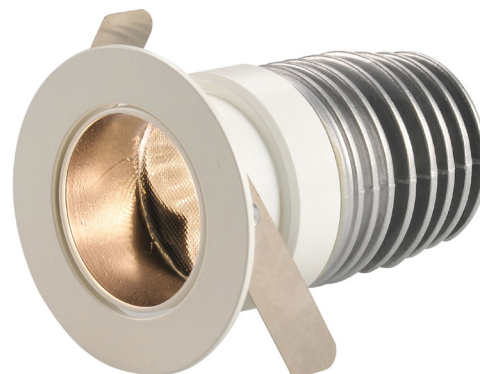
Crestron LED luminaires have a CRI of 86. This is exceptionally high. It means that Crestron luminaires make lit objects appear to have colours similar to the way they appear in natural daylight.

Thermal Management

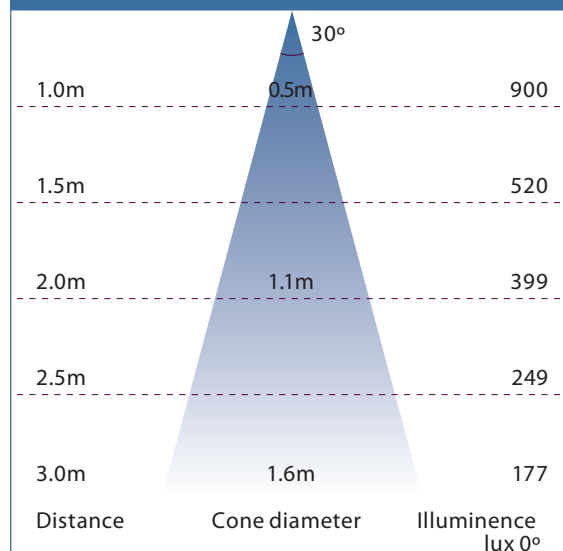
Thermal management is important in CLED100/200. If the LEDs are above recommended temperatures they will produce less light and also deteriorate over time. In order for LEDs to last for at least 70,000 hours L70 it is important that the luminaire's thermal management keeps the LED to appropriate temperatures. The specially designed heat sink controls the operating temperature of the product helping to maintain reliability, lifespan and performance.

Lifespan and Warranty

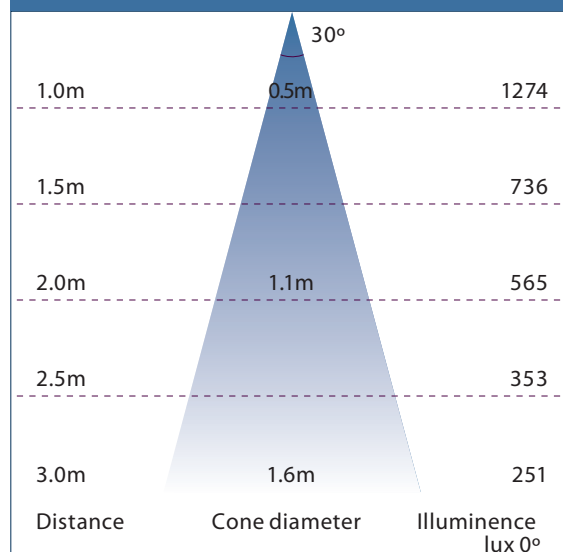
70,000 hours lifespan
5 years warranty on luminaire, 2 years warranty on PSU



Photometric data: CLED100 – 30°



Photometric data: CLED200 – 30°



CLED100 & CLED200 MR-TLT

Mini Recessed Tilt LED Lighting Fixture

SPECIFICATIONS

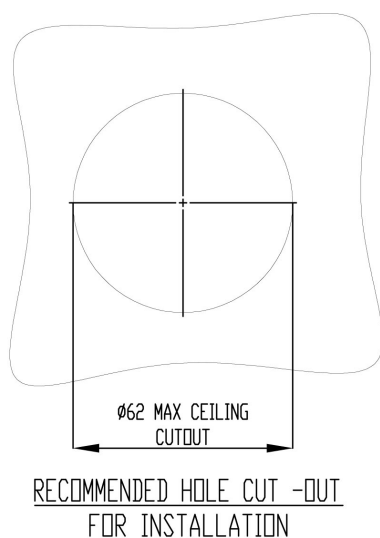
CLED100

Light Source: Cree
Colour Consistency: 1 step MacAdam Ellipse
Colour Rendering [CRI]: 86
Colour Temperature [K]: 2700/2938
Initial Lumens [lm]: 711
Initial Efficacy [lm/W]: 62
Luminaire Lumens [lm]: 637
Luminaire Efficacy [lm/W]: 56
Beam Angle: 30°
Lifetime: 70,000 hours (L70)
Power Consumption [W]: 11.4
Candela: 2975
Low glare reflector [UGI]: 17.0
Tilt: yes - 30°
Hole cut-out: 62 mm
Standard Void Required: 105 mm
Unit height: 95 mm
Bezel diameter : 76 mm
Ingress protection [IP]: 44
Fire-rated: hood needed
Interchangeable lenses & reflectors: yes
Mains dimmable PSU: incl. in price

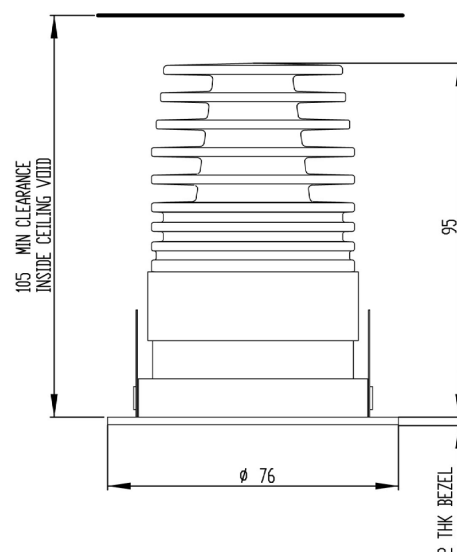
CLED200

Light Source: Cree
Colour Consistency: 1 step MacAdam Ellipse
Colour Rendering [CRI]: 86
Colour Temperature [K]: 2700/2938
Initial Lumens [lm]: 1002
Initial Efficacy [lm/W]: 72
Luminaire Lumens [lm]: 902
Luminaire Efficacy [lm/W]: 64
Beam Angle: 30°
Lifetime: 70,000 hours (L70)
Power Consumption [W]: 11.4
Candela: 4220
Low glare reflector [UGI]: 17.0
Tilt: yes - 30°
Hole cut-out: 62 mm
Standard Void Required: 105 mm
Unit height: 95 mm
Bezel diameter : 76 mm
Ingress protection [IP]: 44
Fire-rated: hood needed
Interchangeable lenses & reflectors: yes
Mains dimmable PSU: incl. in price

Cut-out dimensions



Dimensions

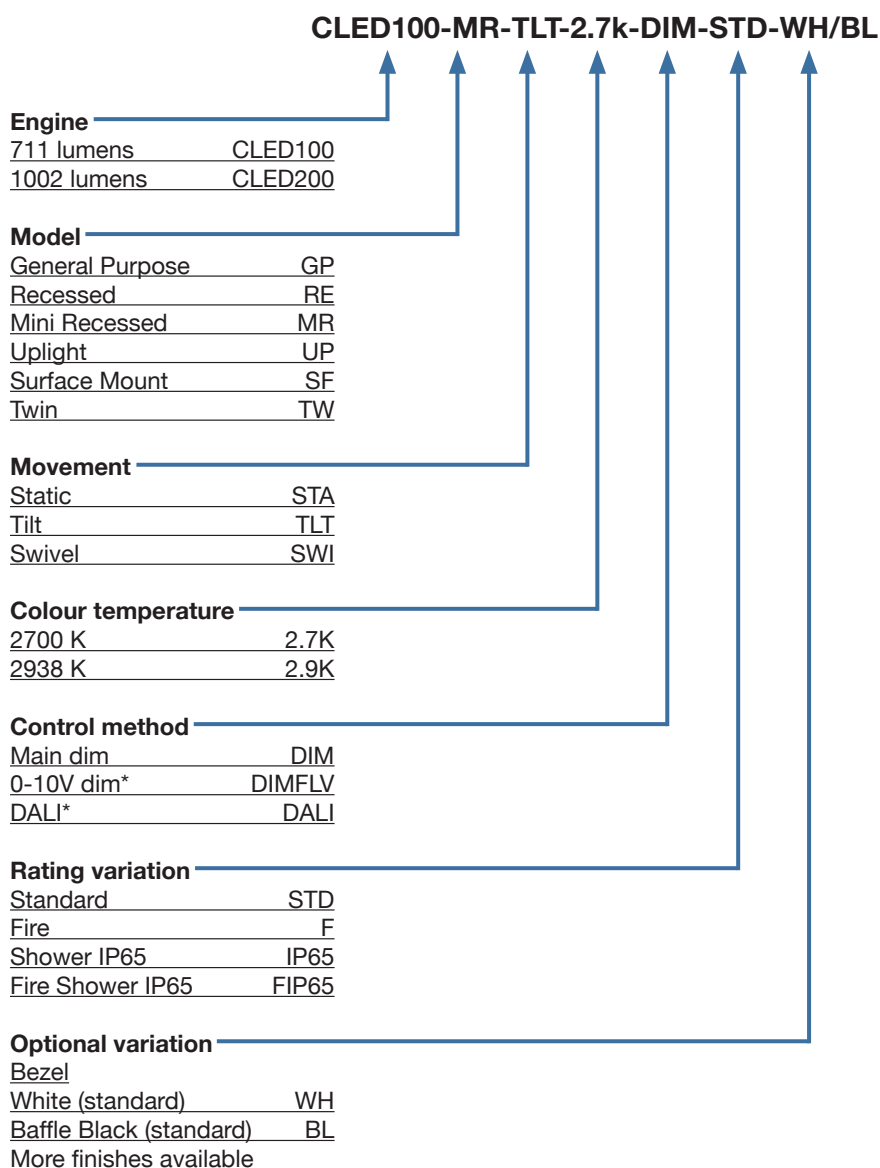


CLED100 & CLED200 MR-TLT

Mini Recessed Tilt LED Lighting Fixture

ORDER CODES

CLED100-MR-TLT-2.7k-DIM-STD
CLED100-MR-TLT-2.7k-DIM-STD
CLED100-MR-TLT-2.9k-DIM-STD
CLED100-MR-TLT-2.9k-DIM-STD
CLED200-MR-TLT-2.7k-DIM-STD
CLED200-MR-TLT-2.7k-DIM-STD
CLED200-MR-TLT-2.9k-DIM-STD
CLED200-MR-TLT-2.9k-DIM-STD



* future product

NOTES: This product may be purchased from an authorised Crestron dealer. To find a dealer, please contact the Crestron sales representative for your area. Specifications subject to change without notice. Crestron is not responsible for errors in typography or photography. 3-Series, Cresnet, Crestron, and the Crestron logo are either trademarks or registered trademarks of Crestron Electronics, Inc. in the United States and/or other countries. 3M and Dual Lock are either trademarks or registered trademarks of 3M Company in the United States and/or other countries. Other trademarks and trade names may be used in this document to refer to either the entities claiming the marks and names or their products. Crestron disclaims any proprietary interest in the marks and names of others. ©2012 Crestron Electronics, Inc.